

**WHAT ARE
YOU GOING
TO THROW
AT IT
TODAY?**



INTRODUCING THE MULTI-TASKING KIOTI *MECHRON*



reco

MECHRON THE 4x4 UTILITY VEHICLE THAT LIVES TO WORK

This is the go-anywhere, do-anything Kioti Mechron. It's ready, willing and able to take on any job you give it. The Mechron is a multi-tasker for the modern age – combining best-in-class power and build quality with rugged good looks and more than a touch of refinement for both driver and passengers.

With the Mechron, ultimate 4x4 performance comes with the territory. Thanks to 4-wheel, fully independent dual A-arm rear suspension and a wide stance, it delivers incredible stability and a super-smooth ride over the roughest terrain. And if you're in a tight spot? The tight turning circle and rear anti-sway bar guarantee you superb cornering. So come on and get acquainted with the Mechron. You're in for quite a ride.





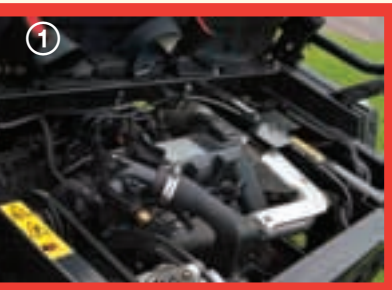

KIOTI

The Mechron has the
widest cargo box (56")
in its class

recommended ✓

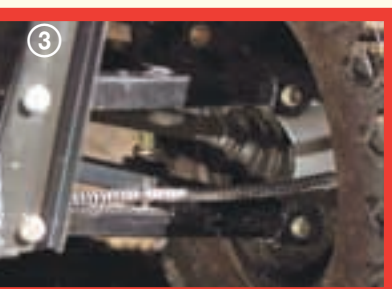
MECHRON TURNING POWER INTO PROVEN PERFORMANCE

The heart of this machine is the durable, proven Kioti diesel power unit. This robust engine delivers 22HP from its three cylinders, but the rated speed of 2,800 rpm is lower than most competitors – so you benefit from better fuel economy, longer engine life and a quieter ride. When it comes to the continuously variable transmission, the equally durable gearbox delivers Hi/Lo speeds and 4WD.



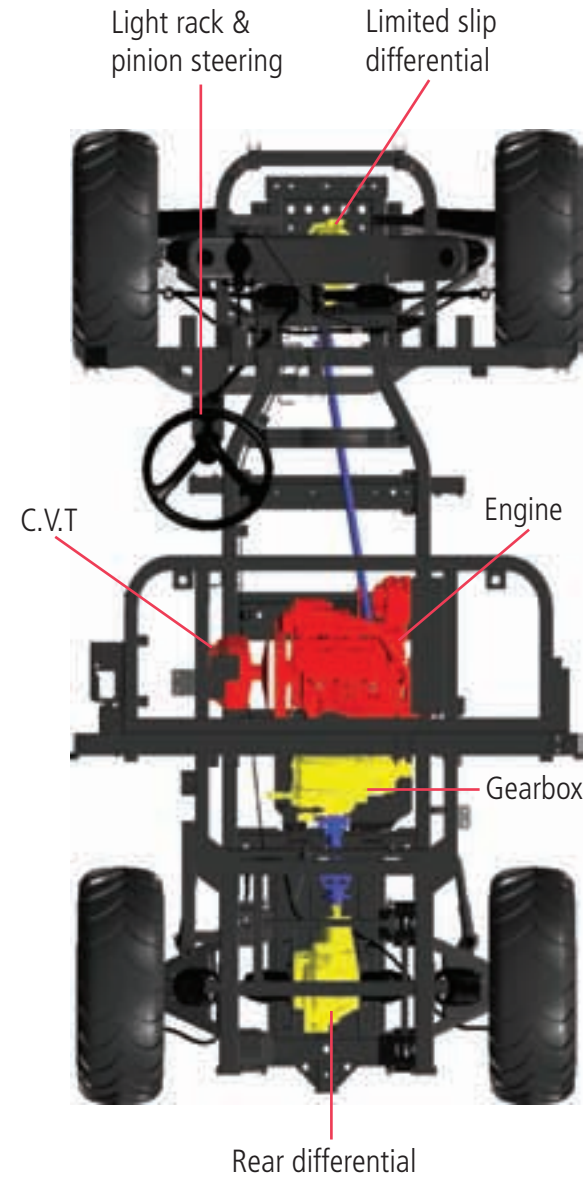
① Proven 22HP diesel power unit gives you reliable performance.

② Hydraulic disc brakes all round deliver excellent safety and performance.



③ The MacPherson Strut front suspension provides a better ride than any of Mechron's competitors.

④ The dual A-arm rear suspension is adjustable, so you can tune it to deliver the smoothest ride on-road, off-road, empty or fully-loaded.



Mechron Power Train



The Mechron has adjustable rear suspension to ensure the smoothest ride wherever you take it

recommended ✓



MECHRON WIDE LOAD COMING THROUGH!

The Mechron is a brilliantly balanced workhorse that benefits from excellent weight distribution with a full payload. And what a payload! The (56") world's widest cargo bed with 500kg capacity is unrivalled for this class of vehicle, so you can haul more on every trip. And with the optional hydraulic tip kit, you can easily offload a heavy cargo without unnecessary hard work.

- ① Recessed tailgate release catches to protect mechanism from damage.



- ② Cargo box large enough to hold a Euro pallet.






KIOTI

The Mechron offers a
standard mechanical or
optional hydraulic tip

recommended ✓

Drive a Mechron and you'll benefit from ground clearance that's a cut above most competitors. The ingenious design provides 12" of ground clearance enabling you to drive almost anywhere. The engine, gearbox and rear differentials sit above the chassis and are therefore protected from damage.

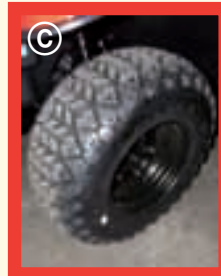
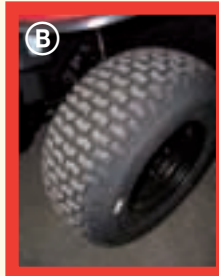


- ① The standard heavy-duty tubular brush guard protects headlights, radiator and front differential from whatever the terrain throws at it. A WARN winch can be attached to it.



- ② Three different tyre options available to suit your requirements.

- Ⓐ ATV
- Ⓑ Turf
- Ⓒ Worksite






KIOTI

The Mechron has the
highest ground clearance
(12") in its class

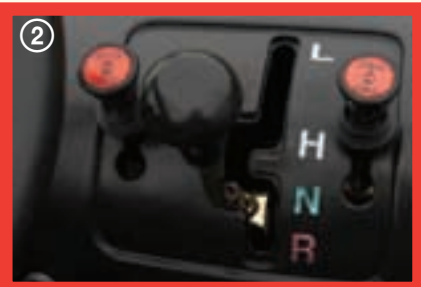
recommended 

MECHRON A MORE ENJOYABLE DRIVING EXPERIENCE

We've seen the quality, now it's time to feel the comfort of the widest 3-seater on the market. The contoured bench guarantees a relaxing ride, with the pair of 2-point retractor seat belts and centre belt fitted as standard. In the cockpit, the stylish dashboard has ergonomically designed controls for easy, relaxed driving whilst the neat and handy storage areas add to the modern-day convenience.



- ① The dashboard cluster features speedometer, hour meter, fuel gauge, coolant temperature gauge and signal indicators.



- ② Differential locks: limited-slip at the front and mechanical lock with lever and cable to rear.

Dashboard mounted dual range C.V.T for ease of use.





KIOTI

The Mechron is the
widest 3-seater on the
market

recommended ✓

2210 EEC Homologated model

Benefitting from exactly the same engine and drive train as the 2200, the 2210 is the only homologated UTV on the market that can carry 3 people. The fully adjustable suspension drivers seat, combined with the two-seat passenger bench ensures that the Mechron 2210 is streets ahead of the competition.



- ① The independent sprung drivers seat is completely adjustable to ensure the safety and accommodate the comfort of the driver.



- ② Working light kit, rear number plate holder, 7-pin trailer socket and wing mirrors fitted as standard.



- ③ Clevis drawbar fitted to rear to enable towing of a trailer.

Please note: although the specifications of the two models are identical, there is a marginal difference in the height of the ROPS bar:

Mechron 2200: 1940 mm

Mechron 2210: 2032 mm




KIOTI

The 2210 is the only
homologated UTV that
can carry three people

recommended ✓

MECHRON PROTECTION FROM THE WEATHER

RECO offer a selection of different cab options which give you that extra bit of comfort and protection from adverse weather conditions.

A selection of options are available to suit different needs and budgets.



① TRAX cab

Available for 2200 only

- Safety-glass windscreen
- Steel windscreen frame
- Polycarbonate side fenders
- PVC rubber bonnet skirt
- Wiper kit
- Spring-loaded roller doors
- PVC rear screen



②

② DFK cab

- Safety-glass windscreen
- Wiper with washer function
- Contoured polycarbonate rear screen
- Sound-proof metal roof
- Lockable doors (removable)
- Sliding glass windows
- Heater (optional extra)

Factory-fit only



③

③ Soft cab

- Cost-effective cab option
- Manufactured by Kioti
- Durable fabric & PVC material
- Roll-up doors

Requires windscreen and sun canopy, both available from RECO



A selection of cab options are available for both the 2200 and 2210

recommended ✓



MECHRON SPECIFICATIONS

Please note that some specifications on the 2210 model differ slightly from the 2200. These differences are shown in italics in the table below.

Engine and electrical

Model	Kioti 3C100LWU
Cylinders/hp	3, 22
Displacement	1007cc
Rated RPM	2800
Type	Diesel

Fuel system

Capacity (lt)	28
---------------	----

Drive train

Type	Belt CVT
Gear range	L,H,N,R
Ground speed (km/h)	0-40km/h
Brake	Hydraulic dry caliper disc

Suspension

Front	MacPherson strut
Rear	Double A-arm independent

Steering

Type	Rack & pinion
------	---------------

Dimensions

Length (mm)	2852
Width (mm)	1543

Height (mm)	1940	<i>2032</i>
Max wheel tread (mm)	F 1262 / R 1228	
Wheelbase (mm)	1940	
Weight (kg)	740	<i>840</i>
Towing capacity (kg)	590	
Payload capacity (kg)	725	
Turning radius (mm)	3690	

Cargo box

Dimensions (lxwxh)	980x1427x293
Capacity (kg)	500

Tyres

Front	25x10-12
Rear	25x11-12

Standard features

3 seat bench	<i>2 seat bench + adjustable drivers seat</i>
Manual tipping box	
Front guard	
Orange bonnet + black	
Speedometer	

Option list

Wind shield (acrylic or glass) + wiper
Sun canopy
Turn signal
Work lighting kit
Hydraulic tip kit
Remote spool valve kit
Front hitch receiver
Green bonnet + black box (special order)
Soft cab
DFK cab
TRAX cab (2200 only)



NB: All information included in this brochure is correct at time of going to press January 2012.

reco
agricultural & groundcare machinery

The machinery you need, the support you deserve

Call 01480 455151 or visit www.reco.co.uk **KIOTI**