

SULKY



> 11/2008 GB



REGULLINE SOLO

REGULINE SOLO

With its “large-width” SOLO seed drills :

**SULKY improves
your drilling output
without compromising
quality**



Reguline Solo : 3.00 m overall transport width



As the drilling specialist, SULKY has equipped the REGULINE SOLO with technical solutions that combine productivity, ease of use and control over seed placement.

- high performance levels, approaching **5 hectares/hour**, thanks to its 6.00 m or 6.66 m working width, central 2,200 litre hopper and a seed placement system with exceptional trash clearance.
- road transport of the compact, mounted SOLO drill is made easier by hydraulic folding which reduces the overall width to 3.00 m.
- exceptional **versatility** : drilling can be performed by the REGULINE SOLO on an average H.P tractor or in one pass when used with a non-powered seedbed cultivator.

- agronomic, economic and environmental benefits with **low seed rate** drilling, thanks to the REGULINE system, which ensures better seed placement along the seed row.
- high levels of standard **equipment**, in particular the largest choice of cab-operated seed drill management systems on the market.

When you include the SULKY's ISO 9001 approved manufacturing systems, you can see why the REGULINE SOLO is **the way** to drill large areas in the shortest time at an extremely competitive cost.



REGULINE SOLO

“Regulated” seed distribution from SULKY : easy setting and top quality seed placement



The hopper

The 2,200 litre gives an operational range of over 13 hectares at a rate of 120 kg/ha on wheat drilling. With **less frequent refilling**, the REGULINE SOLO seed drill boosts work rates.

The 2.70 m wide hopper opening accommodates all filling methods (sacks, Big Bags, in bulk with a filling auger or with a loader bucket).

The folding hopper cover is easy to handle and has been carefully designed to keep out rain and dust.

Safe access to the REGULINE SOLO hopper is provided by access steps which can be converted to a gangway for access to the seed trailer. A wide non-slip platform and full length handrail are also fitted as standard.

The narrow hopper base and “uncluttered” internal construction of the hopper together with the standard sieve and anti-compaction baffle :

- improve seed flow to the seed metering system
- allow distribution even with a small amount of seed in the hopper
- make hopper emptying and cleaning easier.



The metering system

A steady flow, at the required seed rate

The peg wheels are driven by a stepless seed variator, providing an uninterrupted range of settings between 1.5 and 400 kg/hectare and a highly accurate seed rate for both small seeds (rape) and large seeds.



The variator is driven by the wide profile REGULINE SOLO **double pneumatic wheels**. This dual-drive system incorporates a ‘freewheel’ device to provide a reliable rate in all conditions, especially when drilling on curves.

In addition, the freewheel protects the speed variator during unintentional reversing.

Thanks to the braking action from the mud flaps and wheel scrapers, the wheels stop turning when the seed drill is lifted at the end of the run, stopping distribution and preventing seed waste.

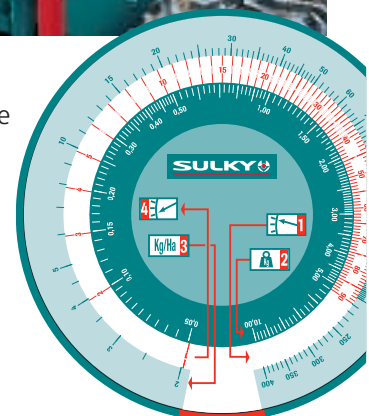
The SULKY speed variator can be fitted with an electronic calibration and modulation kit (see page 8 for the description of *ULTRON MS* and *SPB VISION* consoles).

The calibration test

The static calibration test can be carried out quickly thanks to a crank handle and a double handled swinging tray that makes seed collection and emptying easy.



With just one weighing operation, you can read the correct seed rate setting mark directly from the SULKY calibration scale. This scale makes the field calibration test a straightforward matter in real conditions. SULKY recommends this test for absolute precision for each drilling operation.



Distribution

Precision metering and gentle seed handling

The slowly rotating agitator helps the seed to pass gently from the hopper to the peg wheels on each row of the 48 REGULINE SOLO metering units. Each metering device consists of a fine-tooth wheel for small seeds (e.g. rape) and a peg wheel for cereals, peas, beans etc.

Obturator are supplied as standard so that the large seed rollers can be closed off quickly to allow drilling with the small ones.



Each row of the SULKY metering system consists of a peg wheel attached to a shaft mounted on ball bearings, an independent shutter, a flap that can be adjusted to match seed size and the REGULINE rotary mechanism.

Reliable seed flow at high forward speed

The staggered layout of the pegs on the large seed rollers provides an even supply to each row

The new self-adjusting flap comes with a series of adjustment notches to suit the size of the seed using the convenient lever.

The SULKY metering device is a "row by row" system suited to high output drilling operations and will remain free of blockages at forward speeds of over 15 km/h (9 mph).



Disengaging a drilling half-width is straightforward.



The standard drive for the low maintenance REGULINE SOLO fan is a PTO shaft fitted with a slip clutch (540 and 1,000 rpm). The massive air flow generated transfers the seeds powerfully and smoothly to the coulters. The fan is also fitted with an air filter and an adjustment flap.

The REGULINE system : The benefit of using SULKY - better seed placement along the row

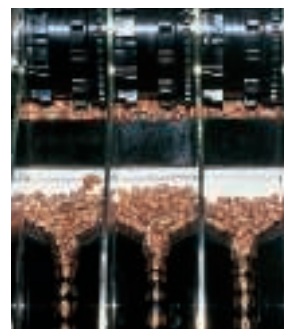
The rotation speed of the REGULINE rollers is proportionally quicker than the peg wheel rotation speed. This aligns the seeds and the controlled

seed flow **reduces bunching and gaps** along the row.

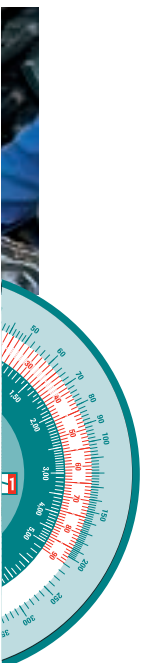
In the right conditions, the agronomic, economic and environmental benefits of **lower seed rates** can be achieved with the REGULINE SOLO



Winter wheat drilled at a rate of 200 seeds/m²



REGULINE system



Exceptional seed placement, with conventional or "UNIDISC" coulters



Controlled drilling depth results in fast, strong and, above all, even crop emergence.

In order to maintain these advantages in any conditions, the REGULINE SOLO coulters units are suited to the high forward speeds and minimum tillage that more and more large-scale farmers are looking for.

"Anti bounce" coulters with the best clearance on the market

56 cm inter-row clearance, coulters units all of identical length and powerful, individual pressure springs that are mounted at an angle, mean :

- trouble free passes on clod covered, trashy or stony soil
- resistance against coulters "bounce" at high speed
- field contours are closely followed
- uniform seed placement on each row.

Precise, central adjustment

The whole **coulters-carrying frame** is assembled onto an **adjustable parallelogram**.



Therefore, depth control is adjusted steplessly and conveniently by two graduated central tie-rods.

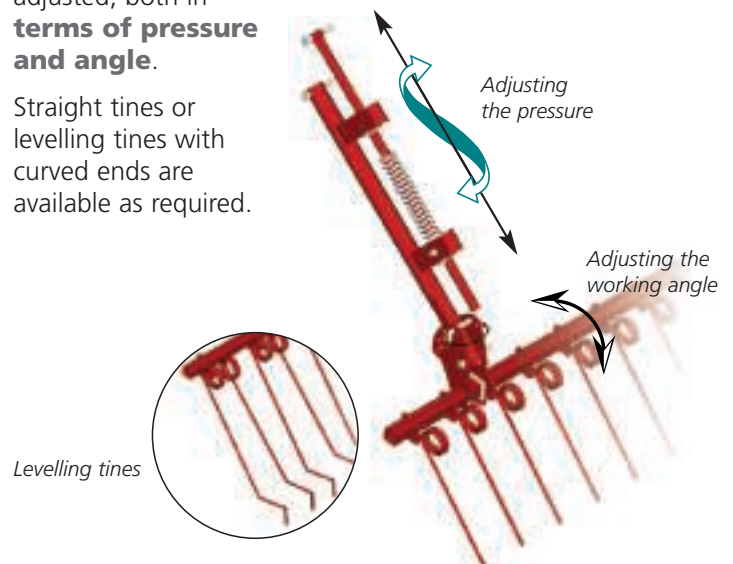
An optional "hydraulic depth control" kit is available for areas with varying soil types and consistencies.

The following harrows

The rear harrows provide optimum seed cover and level the seedbed; depending on the seed type used and the working conditions (e.g. humidity, presence of trash, etc...), the harrows can be adjusted, both in

terms of pressure and angle.

Straight tines or levelling tines with curved ends are available as required.



A range of seed placement systems to suit your cultivation methods



Suffolk couler :

- Enables drilling on nearly all types of seedbed preparation system
- Narrow, highly wear-resistant cast iron couler tip
- Anti-blockage downspout



Stainless steel "Uniband" spreading couler :

- Better seedbed coverage (6 cm wide band)
- Controlled drilling depth
- Instant assembly/dismantling, no tools required
- Stainless steel parts mean longer-lasting efficiency



The depth limiter :

- Improves depth control on loose or mixed soils
- Quick assembly, removal and adjustment



The "UNIDISC" is even more versatile and better suited to minimum tillage systems

- A 300 mm diameter curved disc made from forged steel, with sharp edges to cut straight through the soil, even in heavy trash.
- A cast iron seed couler guides the seed and places it at the required depth before the furrow is closed again; it also allows automatic self cleaning of the disc.
- Heavy-duty design and low maintenance thanks to a double row ball bearing
- Anti-blockage downspouts



The "Unidisc"



Rear Press Wheel :

- Gives an even drilling depth plus strong consolidation along the row
- 8 adjustments, including instant retraction during drilling, a considerable advantage in unpredictable weather conditions
- Fixed or floating position

High-standard equipment

1. "MEDION" electronic kit

This equipment is simple to programme so that the relevant metering rollers are stopped (2 x 2) to suit the selected **tramlining** width. The number of passes is counted automatically using the marker action. At the same time, the control box lowers the pre-emergence markers, if fitted.

The tractor driver can also display the following information :

- forward speed
- surface area covered (partial or total)
- fan speed.

The STOP switch can be used to briefly interrupt counting if a marker needs to be lifted in order to go around an obstacle (tree, pylon, etc...).



2. "ULTRON" electronic control box

Supplied as standard on the REGULINE SOLO, this box has all the same functions as the MEDION while incorporating the additional **end of hopper warning** and fault with metering rotation functions.

3. The "ULTRON MS" electronic kit

This kit provides the same functions as the ULTRON with some attractive extra functions :

- assistance with calibration test
- modulated seed rate during drilling,
- visual and audio warnings.
- assistance with calibration test: simply enter the weight obtained from the weighing operation, followed by the required rate per hectare, and the system will automatically select the variator position



- **instant seed rate modulation during drilling**

in cab, by 10 % stages, e.g. to increase seed rate when approaching a difficult patch of soil

- **seed rate on/off control** from the driver's seat

- **on-screen information** (forward speed, partial or total surface covered, fan rpm)

- If required, the operator can easily revert to manual seed rate-control by simply disconnecting the actuator from the variator



ULTRON MS and SPB VISION : For the rate variator, an electric actuator (with position sensor) is operated from within the cab via the control box.

4. SPB VISION electronic kit

This user-friendly, latest generation electronic box in wide-screen format offers the same features as the ULTRON MS, while also opening up to **new technologies** :

- versatile SULKY seed drill/spreader operation
- storage capacity for 8 different types or variety settings
- GPS interface for automatic in field regulation (precision farming)
- data retrieval (saved work) on PC
- compatible :
GREENSTAR (John Deere),
FIELDSTAR (MF-Fendt),
AGROCOM (Claas),
PROSERIES (RDS), and other systems.





Hydraulic markers

The REGULINE SOLO hydraulic markers can be folded away vertically making it easier to drill on field borders or drive around obstacles (trees, pylons).

They enable **"centre marking"** down the axis of the tractor for a more accurate and easier drive.

Large diameter discs mounted on ball bearings leave clearly visible tracks.



In addition to a heavy-duty, box frame arm, SULKY markers feature a **double safety** system : there's a shear bolt in the event of a collision (passive safety), and a flexible tine mounting which cushions impact on the marker disc (active safety), especially at high speeds. Finally, as regards to transport or storing the seed drill after work, the side markers operate in perfect harmony with the hydraulic folding system

"Extra wide" profile tyres

Size : **31 x 15.5**.

These tyres give the REGULINE SOLO range complete stability during work without compacting the seedbed. The wheel marks are completely removed by eradicator tines (2 pairs for the tractor wheels, 2 pairs for the drill wheels)



Hydraulic fan

This option keeps the fan speed **constant**, even if the tractor PTO is disengaged or the engine speed varies. This is of course essential if the REGULINE SOLO is used behind an implement unit. It requires a single acting valve, with separate, free-flow return.



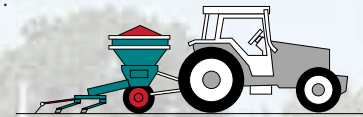
Versatility : yet another strong point for controlling drilling costs

The REGULINE SOLO range has been designed to provide top quality drilling and high output. In practice, weather conditions, soil types, available manpower or tractor H.P may lead you to use these SULKY seed drills in various configurations.



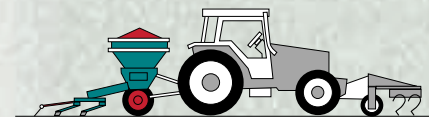
Fast drilling on pre-prepared soils

A lightweight tractor, attention to the seedbed structure, lower fuel costs, etc. : these are some of the benefits of using this configuration.



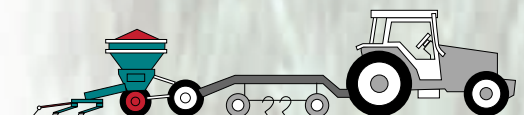
Optimising tractor balance by using a front mounted implement

When sowing, this system enables weeds to be destroyed mechanically and provides the drill with a level and firm soil.



Fewer passes

If you have large fields and a high H.P tractor, combining an implement unit with the REGULINE SOLO will enable you to cover a maximum area the easiest way, substantially reducing your maintenance costs.



Equipment (specify when ordering - ● Standard - ○ Optional)

Type	REGULINE SOLO
CAT. II coupling cover	●
Two drive wheels 31 x 15.5 – 2.2 bar - track 2.6 m	●
PTO 540 or 1 000 rpm c/w slip clutch	●
1 3/8", 6 spline shaft	●
Hydraulic fan (55 litres at 90 bars, 10 m flexible hoses)	○
Fan air filter	●
Loading platform converts into connecting gangway	●
Interior hopper lighting	●
Sieve	●
Anti-compaction baffle	●
Mechanical seed-level indicator	●
Road light	●
"Regulated" distribution with the REGULINE system	●
Centralised 1/2 wigth disengagement LH	●
"Stepless" rate variator c/w calibration scale	●
Variator rpm multiplier for high-output, high-speed drilling > 12 km/h	○
MEDION kit	○
ULTRON Kit	●
ULTRON MS kit	○
SPB VISION kit	○
Centrally-adjusted, gradual depth control via braces	●
2 rows of SUFFOLK coulters	<input type="checkbox"/>
2 rows of UNIDISC coulters	<input type="checkbox"/>
Rear press wheels (40 mm)	○
Depth control modulation (D.A hydraulics)	○
Following harrow (straight or levelling tines)	○
Hinged, vertical-lift "centre" side markers, (SA required)	●
Pre-emergence marker with discs	○
Lateral, front and rear reflectors	○



An important stage in the new SULKY anti-corrosion process : components are dipped by robot into a bath of primer.

Top quality paint for long-lasting protection

All painted components are treated on the SULKY paint line. Once the surfaces have undergone a five-stage cleaning and preparation process, they are dipped in a bath of high adhesion hydro soluble primer. After baking at 130°C, a second anti-corrosion primer and a top coat of polyurethane paint are applied using a spray gun before final baking at 100°C.

Drilling type/width(1)	REGULINE SOLO 6,00 m			REGULINE SOLO 6,66 m	
Road transport width (overall)	3,00 m			3,00 m	
Hopper capacity	2 200 litres			2 200 litres	
Loading dimensions (cm)	115 x 225			115 x 225	
Loading height (cm)	200			200	
Tine spacing (cm)	12,5	13,6	15	13,8	15,1
Number of rows	48	44	40	48	44
Unladen weight (2)	1 840 kg			1 900 kg	

(1) Contact us for other working widths

(2) For information purposes on the standard 48 row model with coulters

All our departments are working for your success.



Today, SULKY is France's leading manufacturer of seed drills and fertiliser spreaders.

As a manufacturer and a provider of service, our first aim is that our machinery continues providing farmers with more productivity and quality. Your order is tailor made to meet your needs in terms of yield. It remains for us to ensure delivery as soon as possible, to explain to you how it works and to secure the supply of spare parts for maintaining your machines. We are ready.

Our dealers are there to help you realise the benefits of your SULKY machine. Our engineers will back them up with additional advice and draw up the necessary instruction books.

Customer service is our priority

Drilling or fertiliser spreading, we are always on your side.



SULKY

*The seed drill
and fertiliser spreader specialists*

SULKY-BUREL S.A. - BP 92111, rue Fabien Burel,
35221 Châteaubourg Cedex FRANCE
Tél. : (33) 02 99 00 84 84 • Fax : (33) 02 99 00 84 60
E-Mail : info@sulky-burel.com • Web : www.sulky-burel.com

