

GRASSHOPPER AERA-vator™ Soil Conditioner

SPECIFICATIONS AND FEATURES



Your Aeration Production Solution

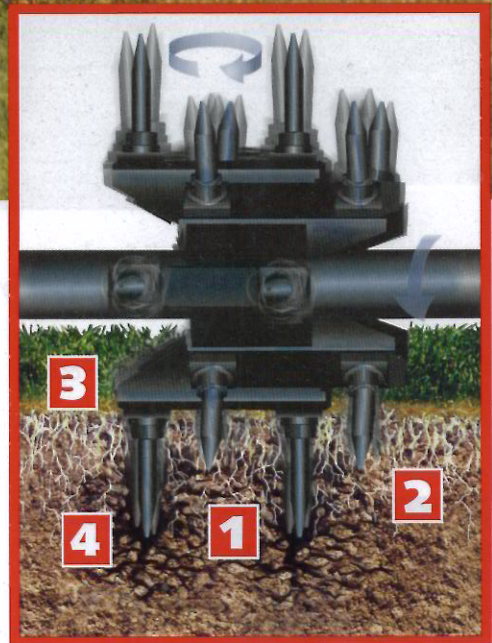
With a professional AERA-vator™ implement for your Grasshopper True ZeroTurn™ FrontMount™ power unit, you can **aerate and loosen compacted soil in 1/4 the time and with 1/4 the labor** it takes with walk-behind aerators. The AERA-vator also eliminates the time and expense of scheduling irrigation prior to aeration. With **no cores to clean up**, and with virtually no surface disruption, **turf is available for use immediately after treatment.**

The PTO-driven AERA-vator features forged-steel tines that vibrate rapidly in an oscillating motion. As the tines penetrate the soil, **areas around and between the holes are fractured, relieving compaction and creating openings for root growth and absorption of water, air, nutrients and chemicals.** Built tough for years of service, the AERA-vator can even **loosen traffic-packed pathways** and areas containing small rocks and obstructions that would damage other units.

When soil compaction caused by foot traffic, sports activities and the operation of equipment or utility vehicles is a problem, periodic aeration becomes essential to **keep turf looking lush and healthy.** By substantially reducing the cost of maintenance per acre, the AERA-vator allows turf care providers to offer **cost-effective aeration** services to large or highly landscaped accounts easily and efficiently.

Grasshopper's QuikConverter™ Implement System makes the **switch between the AERA-vator and cutting decks or other attachments** quick and easy.

First to Finish ... Built to Last



- 1** The AERA-vator's timed, vibrating tines fracture the soil to **relieve compaction** between the holes both sideways and downward.
- 2** Additional pore space under the surface provides **enhanced root growth.** Because compaction can take place at different depths, Grasshopper's variable depth control through ground speed ensures that **aeration takes place at all levels of the turf's root zone.**
- 3** The AERA-vator provides effective aeration with **minimal surface disruption.** There are **no cores to clean up**, and **turf is ready for use immediately after treatment.**
- 4** Tines penetrate the soil with no slicing or cutting action to **preserve delicate turf grass roots and stimulate future growth.**

Promote Healthier Turf with the AERA-vator™

The AERA-vator is perfect for aerating established turf, preparing bare ground for sodding or seeding, and cultivating a plant bed without destroying the mulch.

- **Increases water infiltration** by up to four times relative to a compacted control.
- **Creates a more resilient surface on playing fields** by loosening subsurface soil between the tines.
- **Improves seed germination** with better seed-to-soil contact.
- **Stimulates thatch decomposition** with the scattering of loosened soil by oscillating tines.
- Creates less subsoil compaction and **penetrates harder soils** than aerators weighing twice as much.
- **Increased absorption** reduces the need for turf chemical applications.
- **Loads and unloads easily** for efficient transport to multiple job sites.
- **The harder and dryer the soil, the better the AERA-vator works.**



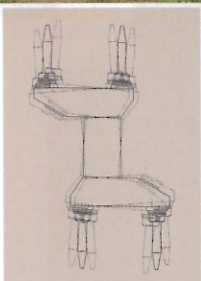
AERA-vator™ Soil Conditioner SPECIFICATIONS

	60-Inch Models equipped with hydraulic lift	40-Inch Model 618 or any 700 or 900 Series Power Unit
Order #	533450	533440
Total Width	66" (167.6 cm)	45" (114.3 cm)
Working Width	60" (152.4 cm)	40" (101.6 cm)
Height	16" (40.6 cm)	16" (40.6 cm)
Tines	96	64
	1/2" x 3 1/4" (1.27 x 8.3 cm) forged/hardened steel, replaceable	
Density	54 holes per square yard (65 holes per square meter)	
Side-to-Side Tine Travel	1 3/8" (3.5 cm)	
Uncrated Weight	392 lbs. (177.8 kg)	272 lbs.* (123.4 kg)
Crated Weight	512 lbs. (232.2 kg)	372 lbs.* (168.7 kg)
Counterweight Required	100 lbs. (45.4 kg)	50 lbs. (22.7 kg)**
Lift Required	hydraulic lift	electric or hydraulic
Lift Kit Part #	N/A	503317 electric or 503324 hydraulic

* Includes Electric Lift

** Not required on 900 Series units

The 40-inch AERA-vator accepts either the electric lift or hydraulic (deck) lift, while the 60-inch model requires the hydraulic (deck) lift.*



The AERA-vator's timed, forged-steel tines vibrate rapidly to penetrate and fracture hard, dry soil, relieving compaction and improving oxygen content and soil texture.



Grasshopper's True ZeroTurn™ maneuverability allows the AERA-vator to operate in small yards and alcove areas where other aerators cannot reach. Simply **engage the lift before executing zero-radius turns and close maneuvers.**



YOUR NEXT MOWER®

RECO

RUSTONS ENGINEERING CO LTD.,

Brampton Road, Huntingdon,

Cambs., PE29 3BS. U.K.

Phone: 01480 455151

Fax: 01480 52116

All specifications and information contained herein are subject to change without notice.

Grasshopper and the Grasshopper logo are registered trademarks, FrontMount, True ZeroTurn and QuikConverter are trademarks of The Grasshopper Company.

All other products are trademarks or registered trademarks of their respective holders.

© 2006, The Grasshopper Company

Litho in U.S.A. 0406-170886